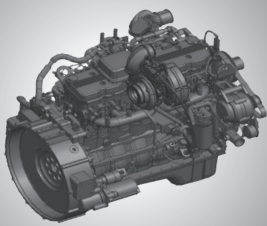


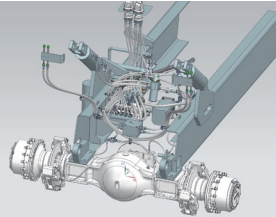
ZOOMLION

FDA6Z

DIESEL FORKLIFT



The forklift truck is equipped with Cummins B6.7 engine that meets Euro V emission standards. It is also installed with a high-efficiency large-capacity torque converter, realizing a driving speed of 25km/h, a gradeability of 30% and a traction force of 150kN.



The hydraulic system used is a dual pump converging system, which has a lifting speed of 350 mm/s and features load-sensitive, preferential steering; The hydraulic braking is light and



The wide-field gantry is designed and the cab front glass is of large arc shape to improve the front view angle.



The cab can be tilted by about 60° for easy maintenance. The wide-angle tilting hood is an open hood, ensuring fast and efficient maintenance.



The backup view can be displayed in real time.

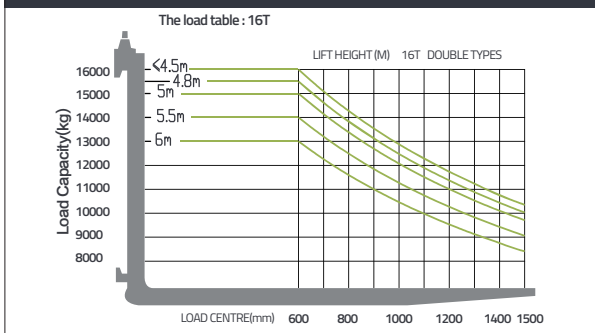


Large-area glass is set at the rear of the cab, making the field of view wider.

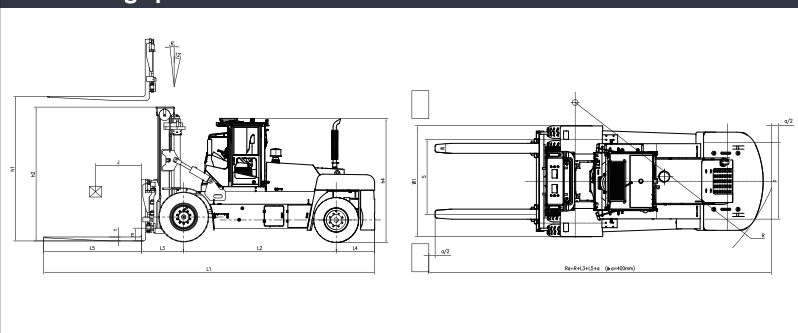
Machine Parameters

Features		FDA6Z
Power	—	Diesel
Rated Capacity	lb	35274
Center of load	J(in)	49.2
Lifting height	h1(in)	157.5
Free lifting height	h3(in)	0
Forks L xW xH	L5xW xT(in)	96x9.8x3.9
Tilt Forward/Backward	-	6/12
Min.turning radius	R1(in)	216.5
Min right angle stalking width	Ra(in)	362.2
Min.ground clearance(Mast) Full Load / Unloaded	m(in)	12.99/11.8
Overhead guard height	h4(in)	120.86
Front overhang	L3(in)	41.7
Rear overhang	L4(in)	37.8
Performance		
Max.traveling speed(loaded)	mi/h	15.53
Max.lifting speed(loaded / empty)	in/s	12.6/13.8
Drawbar pull/Gradeability	kN/%	30
Size		
Overall length(without fork)	L1(in)	229.5
Overall width	W1(in)	109.8
Mast lowered height	h2(in)	153.5
Mast extended height	in	231.1
Chassis		
Tire(Front)	—	12.00-24-20PR
Tire(Rear)	—	12.00-20-20PR
Wheelbase	L2(in)	149.6
Tread width(Front/Rear)	S/P(in)	82.3/83.5
Curb weight(Non-load)	lb	57981.6
Engine		
Engine type	-	Cummins B6.7
Rated power	kW/rpm	149/2200
Rated torque	Nm/rpm	990/1300
Cylinder amount	-	6
Bore xStroke	in	4.2 X 4.9
Displacement	L	6.7
Fuel Tank Capacity	L	160
Working Pressure	Mpa	20

CAPACITY CHART



Machine 2D graph



ZOOMLION
NORTH AMERICA

THUBAS TUNGGAL PERKASA
Make it Better | Your Solutions | Customer is Our Goal

Gang Wates Kp. Rawa Banteng No.83 Rt 003/01 Ds Mekarwangi
Kec. Cikarang Barat, Kabupaten Bekasi, Jawa Barat

T : 0877-8445-0249 E : thubastunggalperkasa@gmail.com W : thubastunggalperkasa.co.id